

2381 Frederick Douglass Blvd Upper Manhattan, NY

Prime Retail Space Available for Lease

Southwest corner of Frederick Douglass Blvd & West 128th Street



Property Size

6,733 sf - Ground

3,520 sf - Basement

Asking Rent

Upon Request

Available:

Immediately

Neighbors

Harlem USA (Magic Johnson Theaters, Old Navy, Chuck E Cheese's) aloft Hotel, Apollo Theater

Comments

- Reasonable divisions considered
- Delivered with HVAC in vanilla box condition
- All uses, including restaurants, considered
- Located at the base of Douglass Park, a newly constructed rental community consisting of 70 one, two and three bedroom apartments.
- Located one half block from The Balton, a new rental community with 156 units, also opening 2011
- Located steps from mass transit and the 125th Street retail corridor

Contact

Brad Cohen

646.374.8575

BCohen@ripcony.com

Jason Pennington

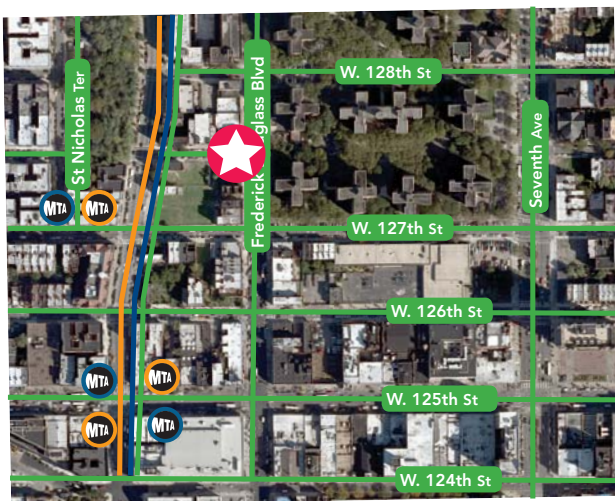
212.750.6565

JPennington@ripcony.com

Zach Nathan


212.750.6565

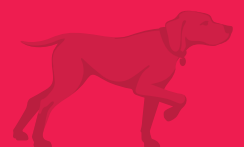
ZNathan@ripcony.com



Mass Transportation

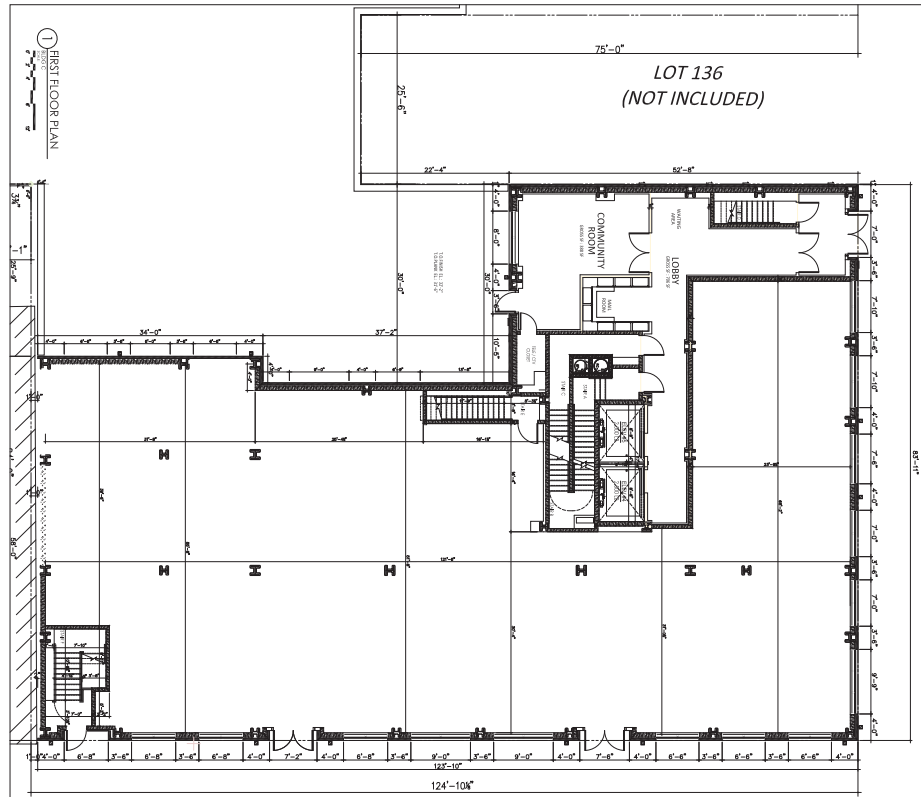
MTA New York City Transit 2010 Subway and Bus Ridership Report

	Annual	Weekday	Weekend
 125th Street	8,003,946	24,584	32,174

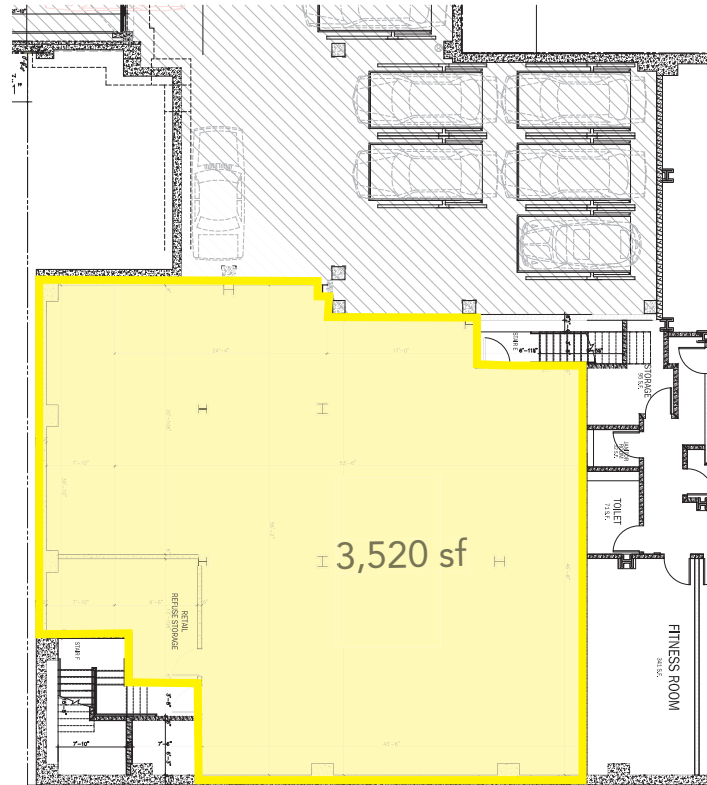


Floor Plans

Ground Floor



Basement



Long Island
420 Jericho Turnpike
Suite 100
Jericho, NY 11753
516.933.8880 tel
516.933.2514 fax

Manhattan
150 East 58th Street
15th Floor
New York, NY 10155
212.750.6565 tel
212.750.6767 fax

Proudly Serving:
Long Island
New Jersey
New York City
Westchester
Lower Connecticut

www.ripcony.com